



30 June 2011

NEX METALS EXPLORATIONS LTD

100% Kookynie Gold Project

Update on activities.

Nex Metals Explorations Ltd is proud to provide the following update on recent company activities.

Highlights

- Mine plan developing for Butterfly Pit toll treating
- Historic grade control drilling from Butterfly incorporated into design
- Mining proposal submitted for Butterfly toll treating

Mine Plan

Nex has been preparing for the commencement of mining at the Butterfly Pit by further evaluating the current and historic resource estimations in conjunction with input from Minecomp Pty Ltd who are conducting new pit optimizations. The historic drill results (exploration and grade control) are being used to define parcels of ore categorized into: 1) high-grade toll-treating ore; 2) medium-grade heap leach ore; and 3) waste (Figures 1, 2 and 3). The mining plan will be centred on these categories with the toll-treating ore transported to an existing mill facility in the area and the heap leach ore stacked on Nex's heap leach facility at Orient Well, 8.5 kilometres to the east of Butterfly.

Figure 1. Schematic Butterfly Pit design with toll-treating (red) and heap leach (brown) volumes.

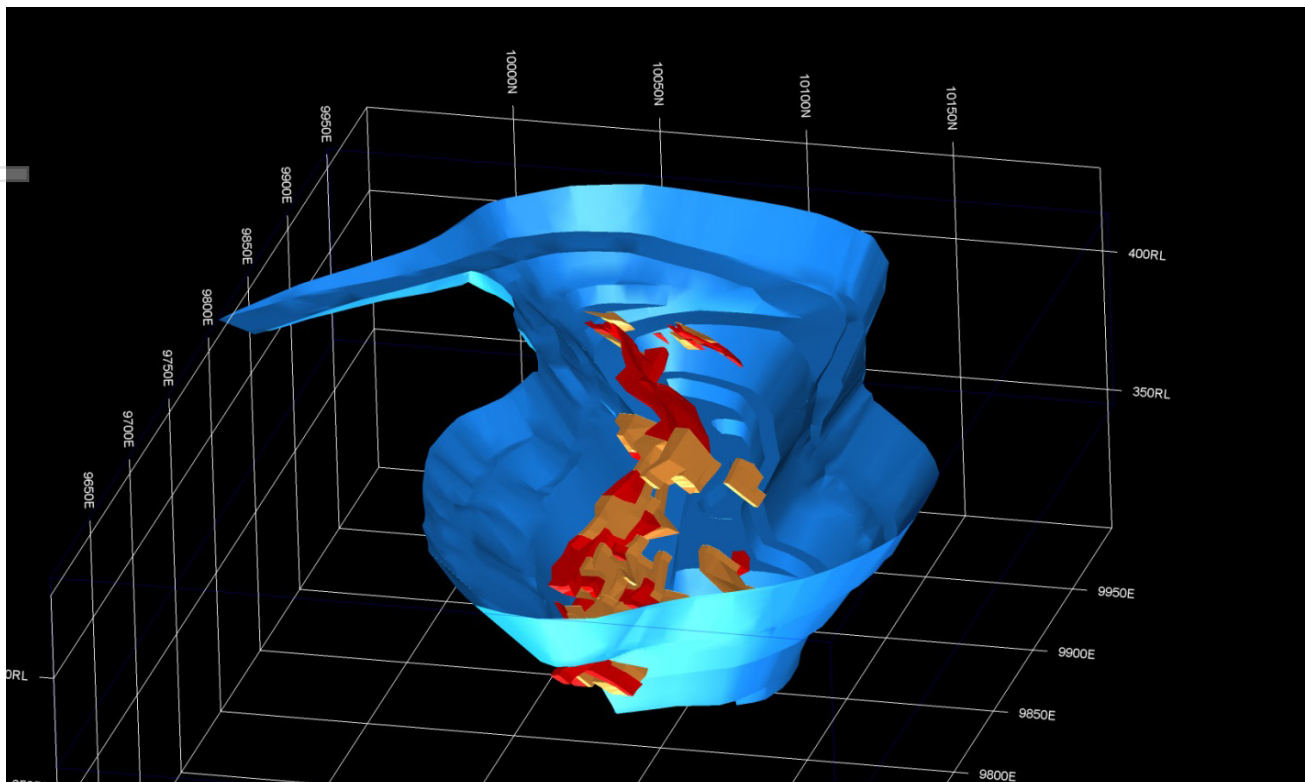




Figure 2. Cross-section 9750N showing the high-grade nature of the primary Butterfly lode. This section is looking grid north with a +/-5 metre window.

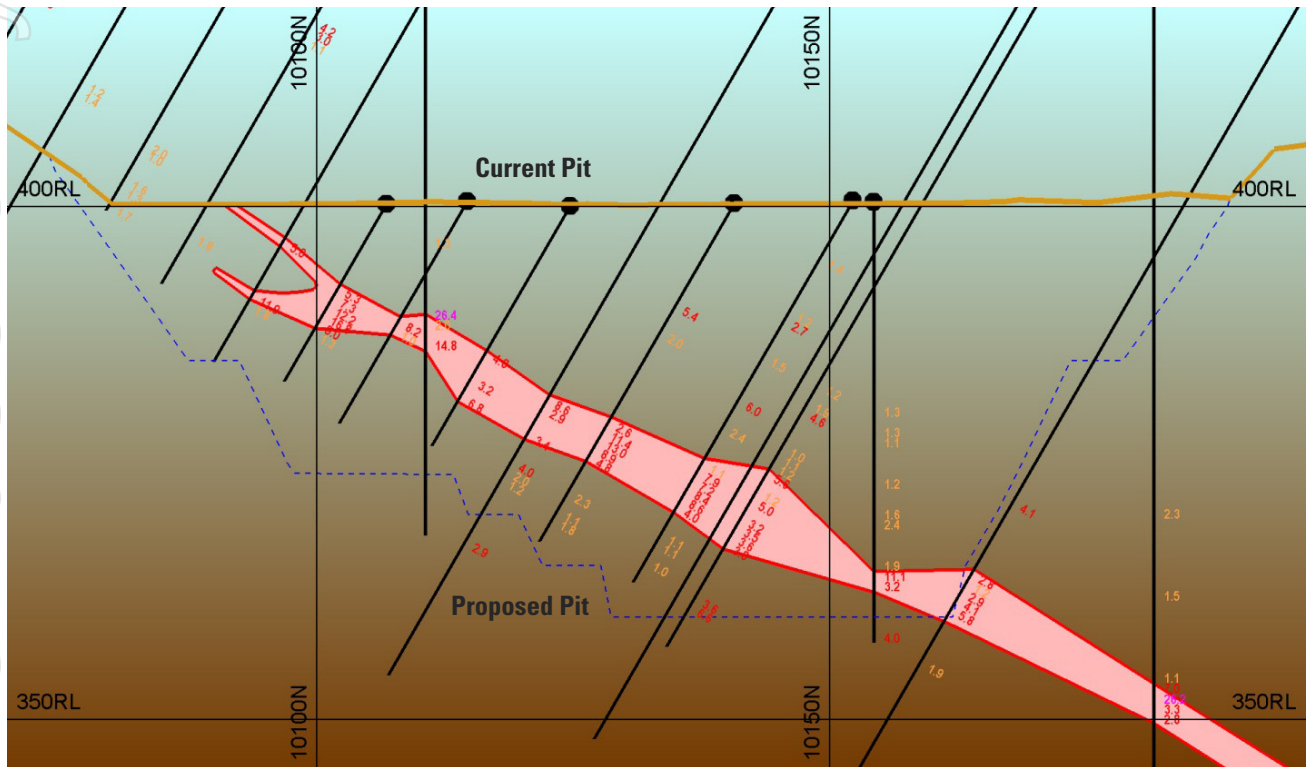
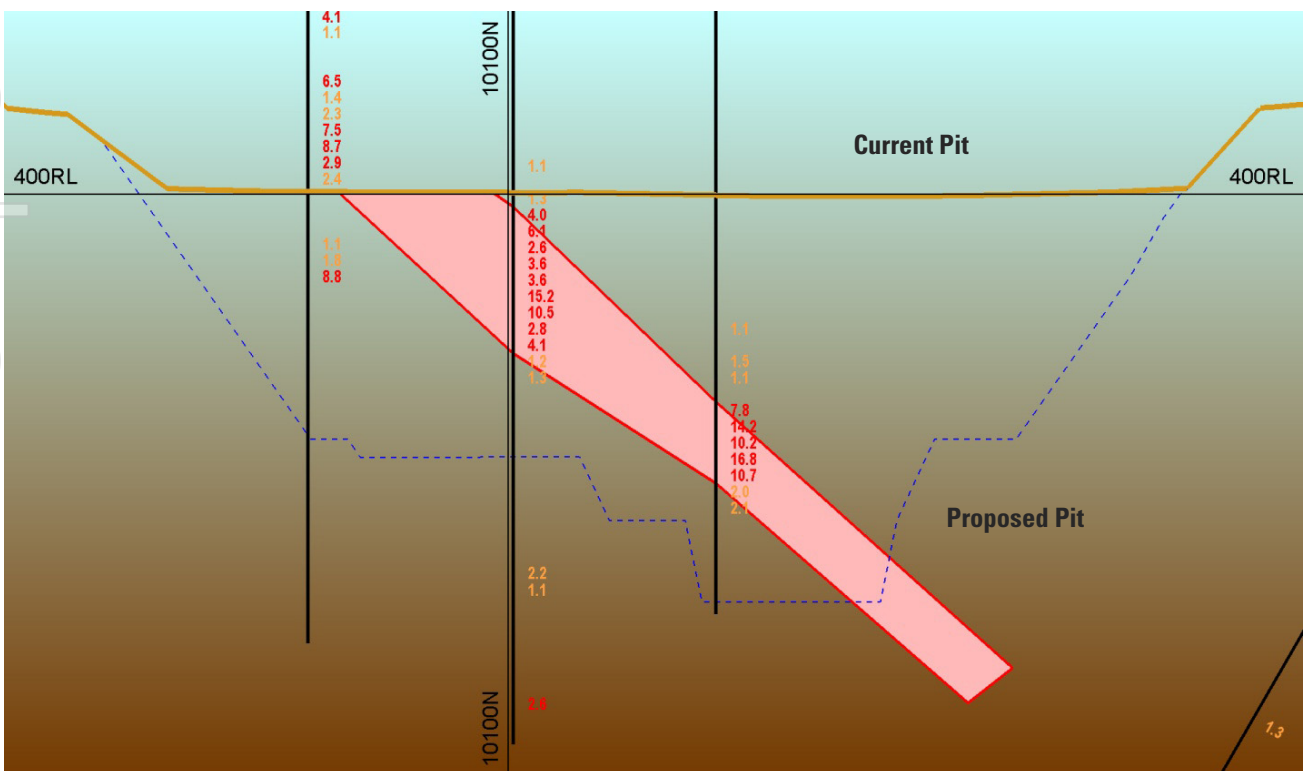


Figure 3. Cross-section 9830N showing the high-grade nature of the primary Butterfly lode. This section is looking grid north with a +/-5 metre window.





Historic grade control drilling results from 2001 and 2002 are incorporated into the Nex database and mining plans. Grade control holes were drilled on a 8 by 12.5 metre grid over the current pit floor giving excellent data coverage. This data provides significant savings in cost and time. Confirmation drilling is planned to ensure overall assay reliability and to test several discrete targets with gold-bearing potential.

Mining Proposal Submitted

A Mining Proposal seeking permission for the resumption of mining of the Butterfly Pit was submitted to the Department of Mines and Petroleum in late June. The proposal plans the extraction of an initial 200,000 tonnes of ore in the higher grade category from the currently defined pit limits, no cutback or footprint expansion is required to deliver the toll-treating ore.

For further details please contact:

Mr Ken Allen
Managing Director

www.nexmetals.com

Responsibility Statement

The information in this report that relates to Exploration Results, Mineral Resources or Ore Reserves is based on information compiled by Rob L'Heureux, who is a Member of the Association of Professional Engineers, Geologists and Geophysicists of Alberta (Canada). Mr. L'Heureux M.Sc., P.Geol., who is a full time employee of APEX Geoscience Ltd., has sufficient experience which is relevant to the style of mineralisation and type of deposit under consideration and to the activity undertaken to qualify as a Competent Person as defined in the 2004 Edition of the 'Australasian Code for Reporting of Exploration Results, Mineral Resources and Ore Reserves'. Mr. L'Heureux consents to the inclusion in this report of the matters based on their information in the form and context in which it appears.