



# Nex Metals Explorations Ltd

ABN 63 124 706 449

## Kookynie Gold Project Phase 3 Diamond Drilling Results

Nex Metals Explorations Ltd (ASX; NME) (“Nex”) is pleased to announce the following update on its 100% owned Kookynie Gold Project.

Results of the recent diamond drilling under the Historical Cosmopolitan Goldmine are as follows;

### Table of Best Diamond Drilling Intersections Cosmopolitan Goldmine Kookynie

Sample Number	Depth From	Depth To	Length (cm)	Weight (grams)	Au (30gm)	AU (Screen)
<b>NXDD 003</b>						
43047	338.5	339	50	1222	55.7	48.1
43048	339	339.5	50	1405	0.38	2.48
43049	339.5	340	50	1115	0.98	3.3
43050	340	340.5	50	1149	0.21	0.61
43051	340.5	341	50	1275	0.28	0.21
43054	342	342.5	50	1075	1.26	1.02
<b>NXDD 004</b>						
43005	243	243.5	50	1472	2.92	2.01
<b>NXDD 005</b>						
43065	240	240.5	50	1103	3.67	3.44
43066	240.5	241	50	830	0.34	0.44
43076	245.5	246	50	1245	0.27	0.68
43077	246	246.5	50	1282	1.25	1.31
<b>NXDD 006</b>						
43096	409	410	100	2528	1.81	0.5
<b>NXDD 002</b>						
43162			100		0.71	0.71
43163			100		0.44	0.61

The Cosmopolitan Goldmine produced 320,000 ounces of gold @ 16g/t ave grade to a total depth of 340metres, prior to 1912. The mine closed with the onset of World War 1.

Nex has drilled the first holes beneath the old workings.

The results are very encouraging because every hole intersected the mineralised structure. Hole NXDD003, the hole displaying visible gold, provided a best intersection of 1.5m @ 17.9g/t.

The Nex board deemed drilling of these diamond holes a high priority as it was essential to establish at an early stage that Phase 3 was a credible long term option for the company.

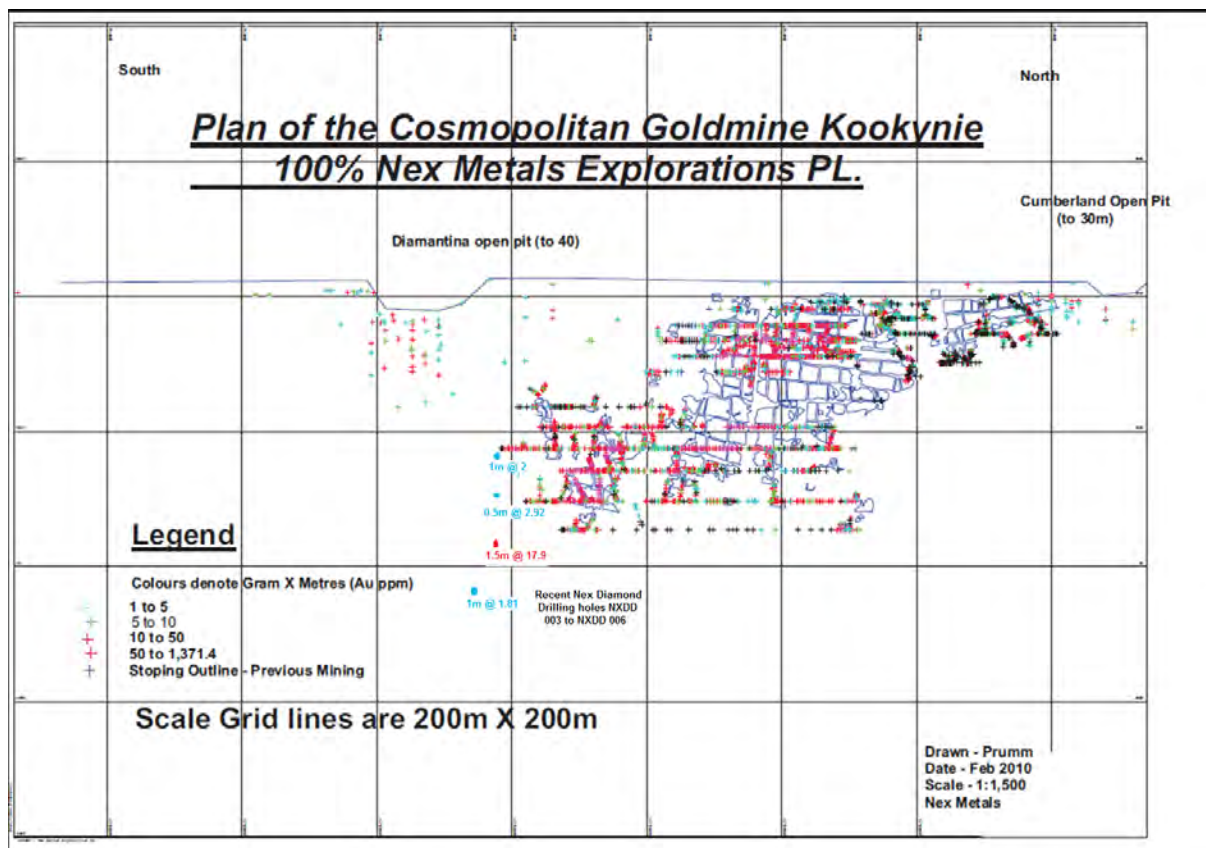
Thus;

Phase 1 has a Mineral Resource Estimate of 41,500 ounces in the Orient Well Laterite. Exploitation will occur when written Department of Environment and Conservation approval is obtained. Tacit verbal approval has already been provided.

Phase 2 has potential for 3 large, low strip ratio, low grade open pits with reported resources of 17.24Mt for 575,000 ounces of gold from the surface to a maximum depth of 120 vertical metres. Nex targets production of 100,000 ounces per annum.

Phase 3 has intersected the Cosmopolitan mineralised structure in each of the 6 diamond drillholes completed with a best intersection displaying visible gold (1.5m@17.9g/t). This means Phase 3 is credible and will play a big part in the long term growth of Nex Metals.

**Figure 1 Underground Assay Results Cosmopolitan - Recent & Historical.**



The diagram above shows the location and importance of the recent Nex Diamond Drilling. Note the grades displayed on the plan from underground bulk sampling.

## Discussion

The Nex DD samples were initially submitted for a 30gram fire assay. The samples were then re-assayed using the screen fire method hence the time delay for final assay results.

The coarse gold fraction +75um averaged 3.83 times greater than the fine gold fraction -75um for the samples tested, highlighting the coarse gold nature of these samples.

The Cosmopolitan gold mineralisation is very similar in nature and style to the Higginsville and Norseman gold deposits.

**Mr Ken Allen**  
Managing Director  
0448 447 472

**Mr Edd Prumm**  
Technical Director  
0448 966 377

## ***Responsibility Statement***

*Mr E Prumm the Technical Director and Exploration Manager of the Company is a Member of the Australasian Institute of Mining and Metallurgy, and the Australian Institute of Geoscientists. Mr Prumm has sufficient experience which is relevant to the style of mineralisation and type of deposit under consideration and to the activity which he is undertaking to qualify as a Competent Person as defined in the 2004 Edition of the "Australasian Code for Reporting of Exploration Results, Mineral Resources and Ore Reserves". Mr Prumm consents to the reporting of this information in the form and context in which it appears.*